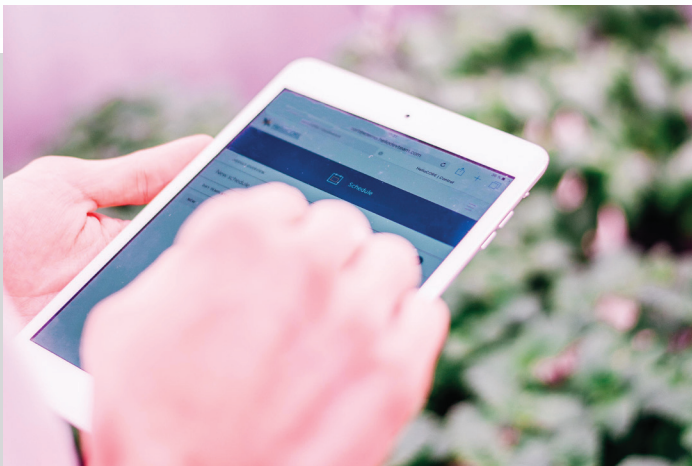




heliospectra DYNA



THE MOST ADVANCED R&D LIGHTING SOLUTION ON THE MARKET, OFFERING PLANT SCIENTISTS CENTRALIZED SOFTWARE CONTROLS AND NINE INDIVIDUAL, PROGRAMMABLE WAVELENGTHS.



Schedule Controller

Automated Light Response with market leading schedule control

The HelioCORE Schedule Controller allows you to induce flowering or extend the photoperiod for food and long-day flower crops using automated and pre-set schedules. Apply customized lighting strategies across the production and harvest cycle.



Increase Yield

Achieve consistent year-round yields by supplying perfect light 365 days per year to ensure optimal plant growth and crop quality.



Control Consistency

Achieve negotiation advantages in the marketplace to secure premium pricing and deliver superior products with predictable results.



Accelerate Harvest

Shave days off production and harvest cycles to maintain tight inventory control and time to market.



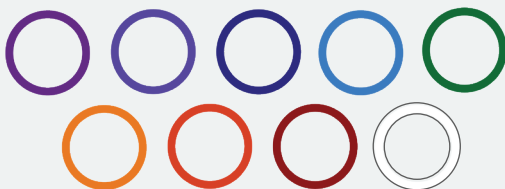
Improve Quality

Enhance crop appearance, improve taste, decrease waste, boost nutritional values and extend shelf life, harvest after harvest.

- Description: 10.5 to 420 W programmable LED Plant Lighting System
- Dimensions: 19.9 cm (7.8 in) x 21.9 cm (8.6 in) x 42.5 cm (16.7 in)
- Input Voltage: 85 to 305 VAC, 50/60 Hz
 - Ampere: 5.25A @ 120V | 2.6A @ 240V | 2.3A @ 277V
- Operating Temp: 0 to 40° C (32 to 104° F)
- Storage Temp: -20 to 70° C (-4 to 158° F)
- Housing: Powder coated, zinc treated sheet metal and durable ABS plastic
- Hanging Attachments: I-hooks
 - Cooling: Active, variable speed cooling. Fan rated to 70 000 hrs at 40° C, 60% humidity, 90% CL
- Working Humidity: 10 to 95%, non-condensing
- Status Indicators: Status LED for power/system status indication
 - Weight: 8 kg (17.6 lbs)
 - Warranty: 3 years
 - Lifetime: 50 000 hrs (at ambient temp of 25° C rated life to 70% of initial photon flux)
 - Certifications: MET, RoHS, REACH
- Ingress Protection Rating: IP24
- Microprocessor: 32-bit microprocessor (80MHz)
 - Networking: RJ 45, 10/100 MBit IPv4 Ethernet and WiFi 802.11 b/g
 - DHCP: DHCP for IP address management
 - Web UI: HTTP web interface for simple management



Spectrum



Wavebands: UV-B (380nm), Blue (400, 420, & 450nm), Green (520nm), Red (630, 660nm), Far Red (735nm), & White (5700K)

DYNA is the world's most flexible plant science R&D tool, perfect for research and laboratory use.

Recommended Applications:

- Research such as plant development, plant physiology, plant biochemistry, and entomology, etc.
- Research lab walk-in chambers, growth cabinets and research greenhouses.
 - Phytochemical development and medical plants.

Heliospectra AB, Global

Frans Perssons väg 6
412 76 Gothenburg
Sweden
Tel: +46 31 40 67 10

Heliospectra, Inc., Americas

1005 Northgate Dr. # 325
94903 San Rafael, CA
United States
Tel: 1-888-942-GROW

For more info visit our website:

www.heliospectra.com
or email
sales@heliospectra.com