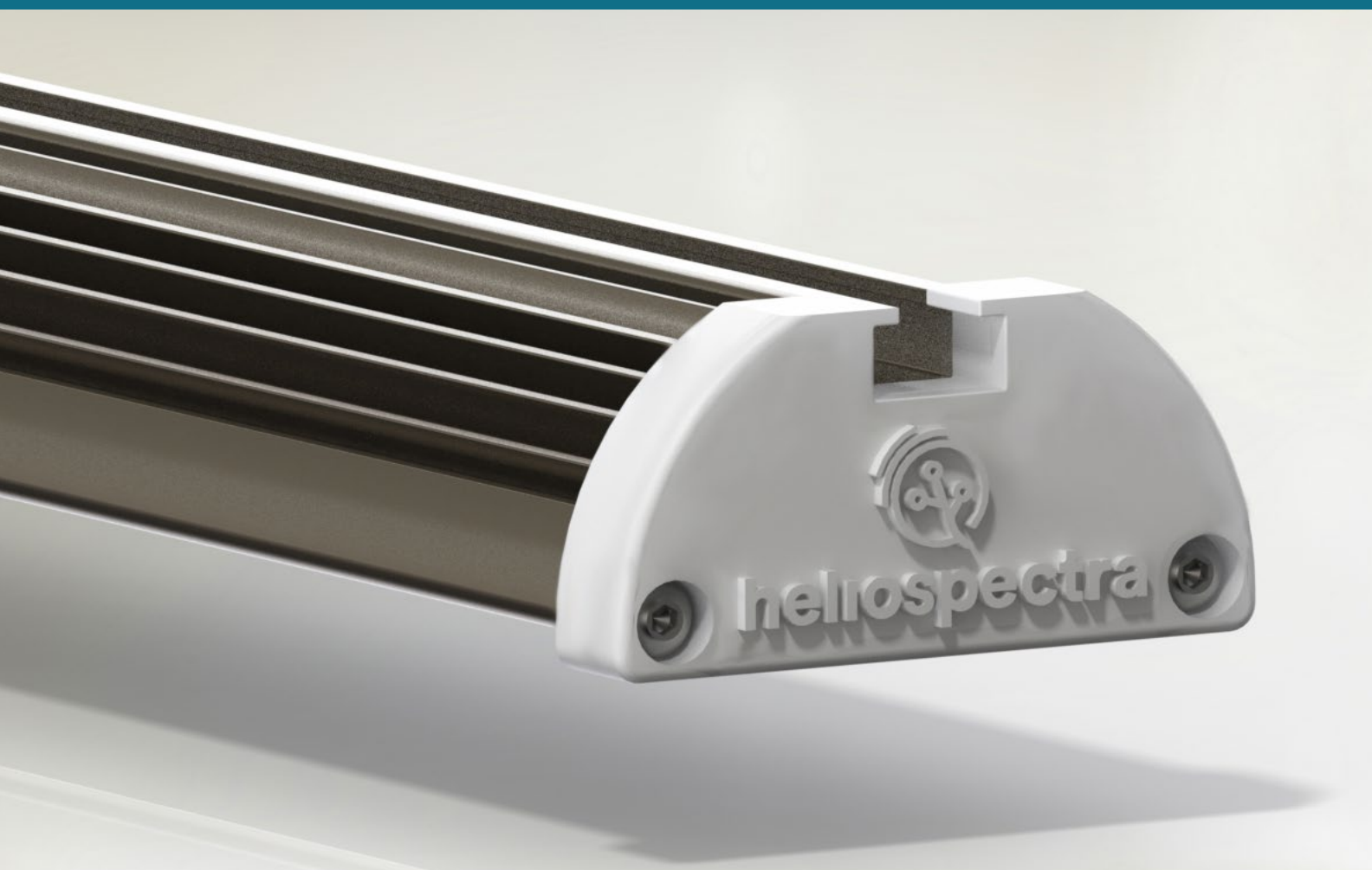


Introducing the NEW Heliospectra SIERA Light Bar



A Spectrum For Every Application



Propagation Light

Intended for propagation of plants that are to be deployed to a greenhouse for full growth stage.



Indoor Production Light

Spectrum with a low amount of far red. Intended for plants grown seed to harvest in an indoor environment.



Far Red Treatment

Promotes stem elongation and potential to increase shelf life.



High Blue Treatment

Promotes compact growth, leaf coloration and may increase antioxidants and some vitamins.



Grafting/Healing Treatment

Spectrum designed for plant healing such as in tomato grafting. (Verified and designed together with tomato producer Nature Sweet)



Technical Specifications: SIERA Light Bar

Dimensions: 1165 x 50 x 25 mm (46in x 2in x 1in)

Weight: 1 kg (2.2 lbs)

Voltage Range: 80 - 305 VAC

Life Span: 50,000 hrs (rated life to 90% of initial photon flux)

Controllable: Dimmable on power supply

Mounting: Built in T-slot

Compliance: CE, cETLus, ROHS - pending

Daisy Chain Amount: 5 pcs per power supply channel

Variants: Variants based on spectral compositions

VDC Cable Length Options (to power supply): 3 m (9 ft 10 in), 1.5 m (4 ft 11 in), 0.5 m (1 ft 7in)

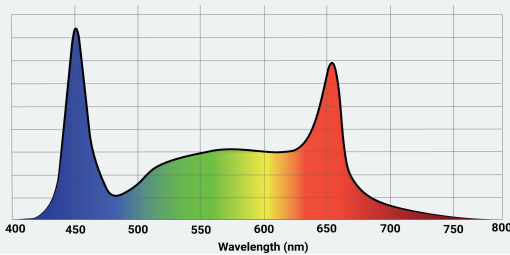


Propagation Light

Power Consumption: 0 - 46 W

Current: 0.95 A

Heat Value: Up to 157 BTUs/hr

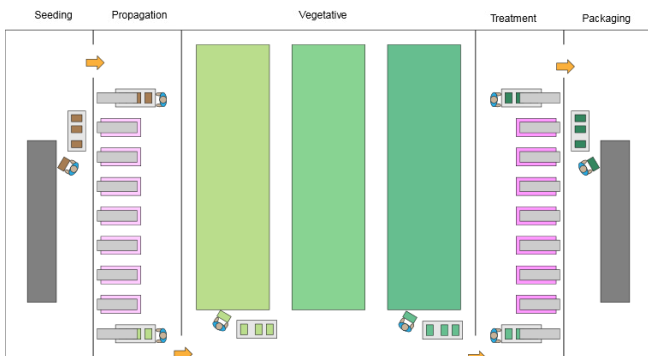
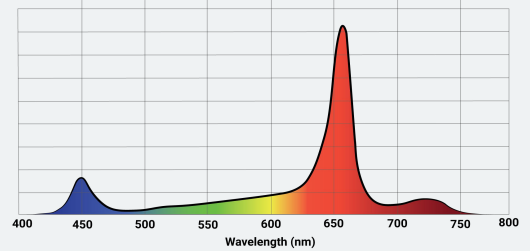


Indoor Production Light

Power Consumption: 0 - 42W

Current: 0.87 A

Heat Value: Up to 143 BTUs/hr



Supporting Existing Growth Operations

The different lightbar variants will promote propagation, grafting/healing, cloning, full indoor sole source growth and different types of treatment lights.

Growers will be able to optimize an already existing operation by introducing vertical farming to parts of the installation that make sense for them.

For more information contact sales@heliospectra.com
or visit www.heliospectra.com